

# TRANSCALC HSM DEVELOPMENT SOFTWARE

edwardsvacuum.com

**With Edwards you can quickly and flexibly create the perfect vacuum solution for your needs.**

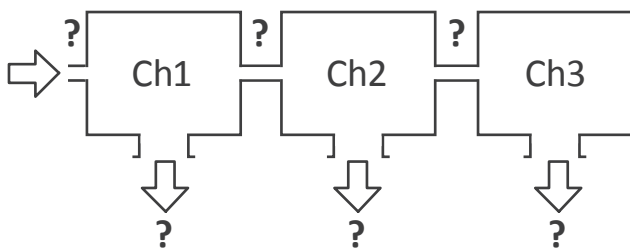
When an off the shelf pump will not meet your requirements for space or performance, our Applications & Derivatives team will develop a bespoke vacuum solution to turn the proposed modelled system into reality.

At Edwards a partnership approach is taken to system design, and it all starts with a vacuum expert using *TransCalc HSM* to optimise your vacuum system. Developed in-house, *TransCalc HSM* is a unique program used to simulate the complete vacuum system from atmosphere to ultra-high vacuum (UHV). This software has been developed to give rapid simulation of the behaviour of the proposed vacuum solution to ensure it perfectly meets your requirements. Accurate computer simulation offers you the chance to streamline your development cycle, avoiding a costly iterative approach and delivering a quicker time to market.

A typical example of how *TransCalc HSM* would be used to optimise your system follows three simple steps:

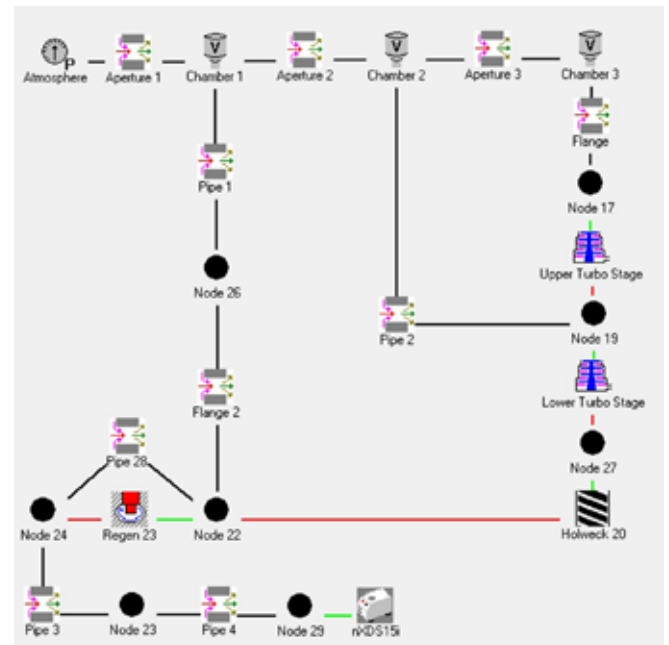
**STEP 1: Define the system with unknowns**

You provide us with your vacuum system requirements.



**STEP 2: A TransCalc HSM model is built**

Edwards vacuum expert will produce models of solutions that match your requirements. A variety of alternative configurations will be considered to deliver reduced power consumption or increased gas throughput.



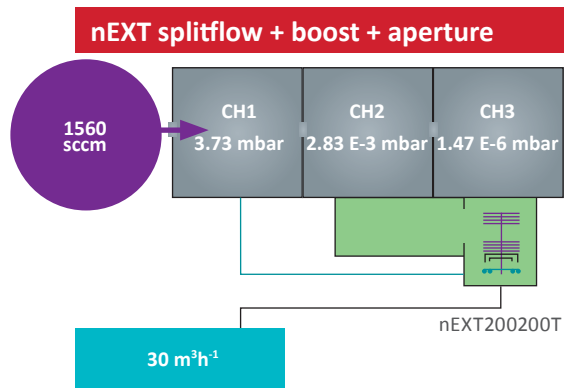
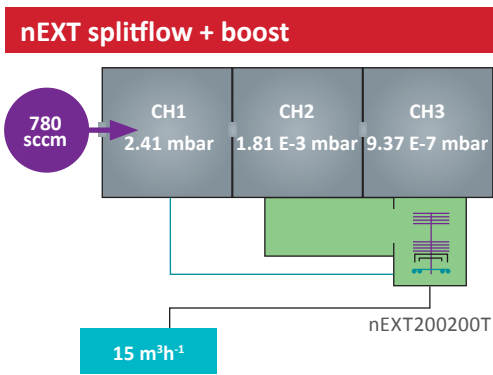
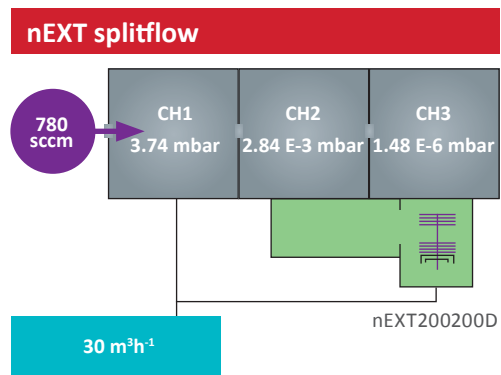
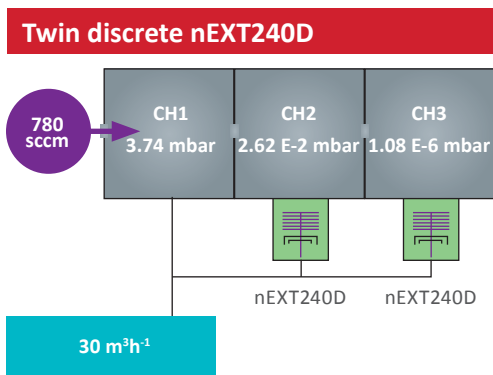
Screenshot taken from *TransCalc HSM*

***TransCalc HSM* enables the rapid modelling of vacuum systems in order to decide on variables such as inter-chamber aperture sizes and pump combinations without the need of an extended trial and error process.**

**STEP 3: The simulation is run and will provide the modelling data in a concise format**

Performance Data	Throughput (sccm)	Aperture 1 Diameter (mm)	Chamber 1 (mbar)	Aperture 2 Diameter (mm)	Chamber 2 (mbar)	Aperture 3 Diameter (mm)	Chamber 3 (mbar)	Total Power (W)
<b>Twin discrete nEXT240D</b>	778	0.30	3.74	1.00	2.62E-03	1.00	1.08E-06	71.3
<b>nEXT splitflow</b>	778	0.30	3.74	1.00	2.84E-03	1.00	1.48E-06	48.8
<b>nEXT splitflow + boost</b>	778	0.30	2.41	1.00	1.81E-03	1.00	9.39E-07	62.0
<b>nEXT splitflow + boost = aperture</b>	1562	0.43	3.73	1.00	2.83E-03	1.00	1.47E-06	81.4

You can then decide which solution best satisfies the priorities of your application; be it cost, power consumption or absolute performance.



**GLOBAL CONTACTS**

Publication Number: 3601 0296 01  
 © Edwards Limited 2016. All rights reserved Edwards and the Edwards logo are trademarks of Edwards Limited

Whilst we make every effort to ensure that we accurately describe our products and services, we give no guarantee as to the accuracy or completeness of any information provided in this datasheet.

Edwards Ltd, registered in England and Wales  
 No. 6124750, registered office: Innovation Drive, Burgess Hill, West Sussex, RH15 9TW, UK.

**EMEA**

- UK** +44 1444 253 000 (local rate) 08459 212223
- Belgium** +32 2 300 0730
- France** +33 1 4121 1256
- Germany** 0800 000 1456
- Italy** + 39 02 48 4471
- Israel** + 972 8 681 0633

**ASIA PACIFIC**

- China** +86 400 111 9618
- India** +91 20 4075 2222
- Japan** +81 47 458 8836
- Korea** +82 31 716 7070
- Singapore** +65 6546 8408
- Taiwan** +886 3758 1000

**AMERICAS**

- USA** +1 800 848 9800
- Brazil** +55 11 3952 5000

